

**Blanchardstown to  
City Centre Core Bus  
Corridor Scheme**  
May 2022

**Natura  
Impact  
Statement**

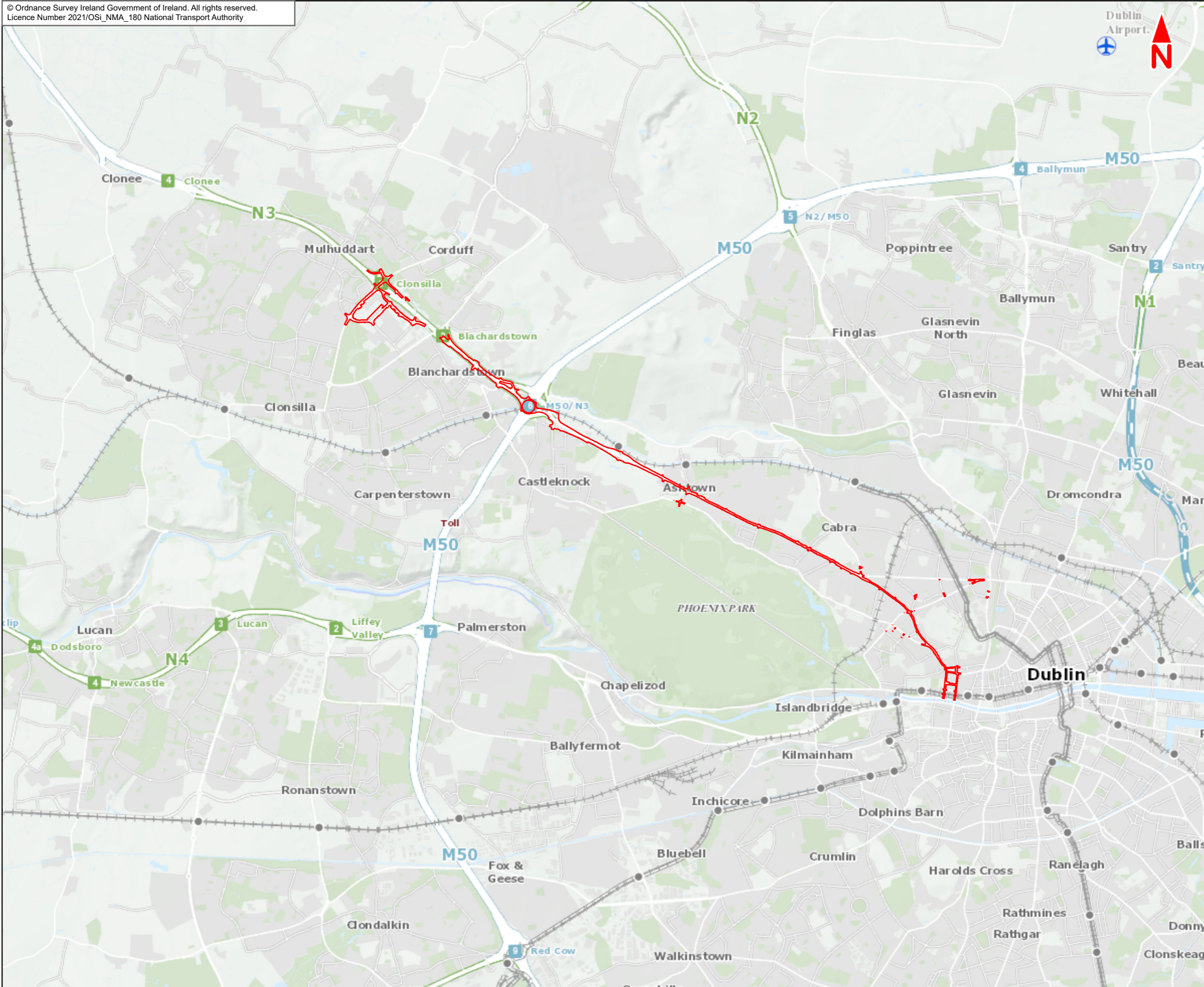
**Figures and  
Appendices**

**BUS  
CONNECTS**

SUSTAINABLE TRANSPORT FOR A BETTER CITY.

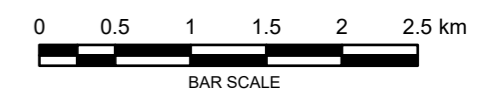


**Figure 1**  
Proposed Scheme  
Location



**Legend :**  
 Blanchardstown to City Centre Core Bus Corridor Scheme

This drawing is not to be used in whole or in part other than for the intended purpose and project as defined on this drawing. Contains Irish Public Sector Data licensed under a Creative Commons Attribution 4.0 International (CC BY 4.0) licence.



**Disclaimer**  
 a. © National Transport Authority (NTA) 2021. This drawing is confidential and the copyright in it is owned by NTA. This drawing must not be either loaned, copied or otherwise reproduced in whole or in part or used for any purpose without the prior permission of NTA.  
 b. This drawing is to be used for the design element identified in the titleblock. Other information shown is to be considered indicative only. The drawing is to be read in conjunction with all other relevant design drawings.  
 c. O.S. data used for plans are printed under © Ordnance Survey Ireland Government of Ireland. All rights reserved. Licence Number 2021/OSI\_NMA\_180 National Transport Authority. All elevations are in metres and relate to OSI Geoid Model (OSGM15) Mean Head. All Co-ordinates are in Irish Transverse Mercator Grid (ITM) as defined by OSI active local GPS station.  
 d. Information concerning the position of apparatus shown on this drawing is based on drawings supplied by the utility owners and/or the utility works contractor, whilst every care has been taken in the preparation of this drawing, positions should be taken as approximate and are intended for general guidance only and no representation is made by the NTA as to the accuracy, completeness, sufficiency or otherwise of this drawing and the position of the apparatus. The information contained herein does not purport to be comprehensive or final as the apparatus is subject to being altered and/or superseded. Recipients should not rely on this information. Any liabilities are hereby expressly disclaimed.  
 e. The information contained herein has been provided by the NTA but does not purport to be comprehensive or final. Recipients should not rely on the information. Neither the NTA nor any of its directors, officers, employees, agents, stakeholders or advisers make any representation or warranty as to, or accept any liability or responsibility in relation to, the adequacy, accuracy, reasonableness or completeness of the information provided as part of this document or any matter on which the information is based (including but not limited to loss or damage arising as a result of reliance by recipients on the information or any part of it. Any liabilities are hereby expressly disclaimed.



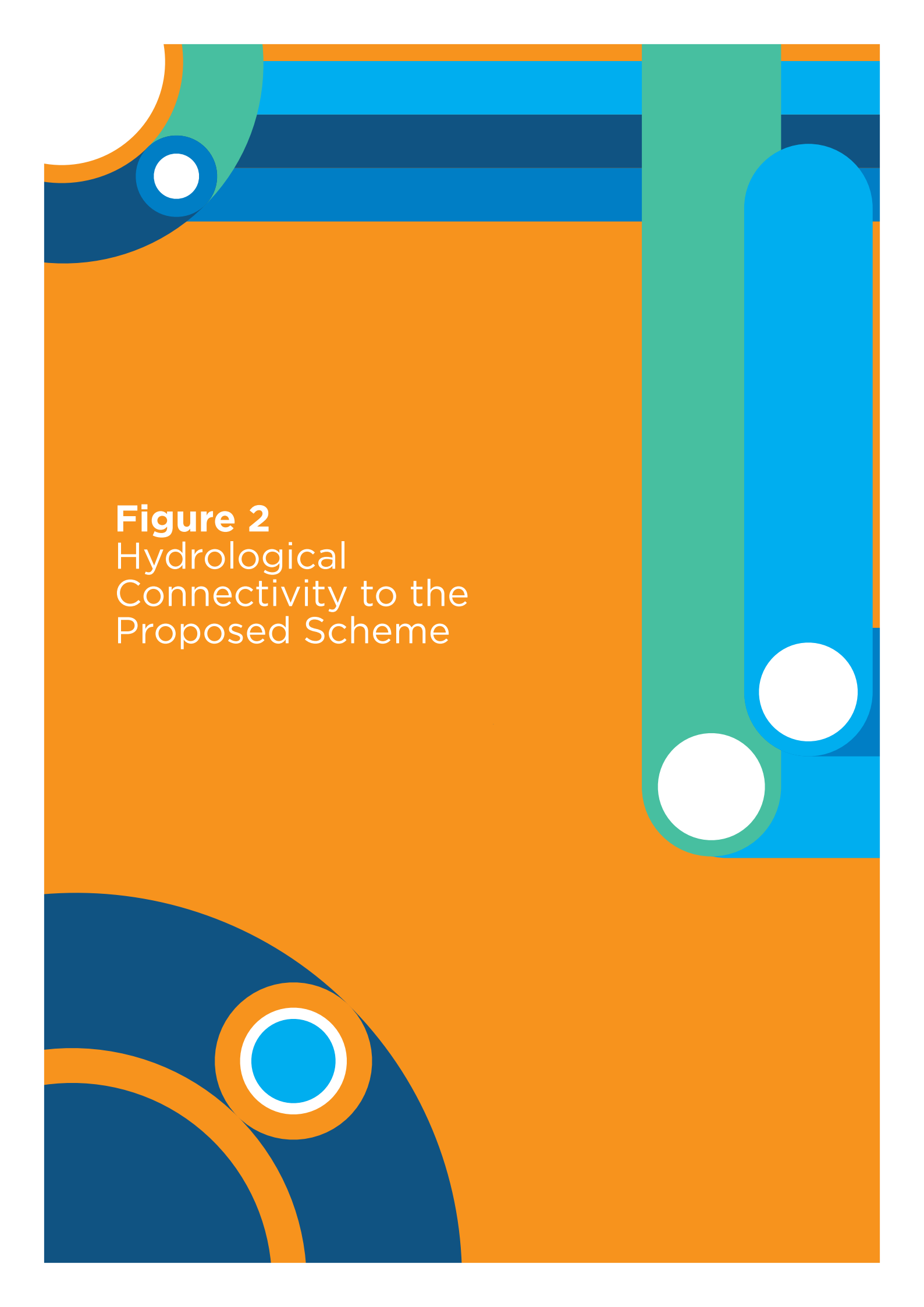
Rev	Date	Drn	Chk'd	App'd	Description
M01	Mar 2022	EK	PW	DK	ISSUE FOR PHASE 4 : PLANNING

Client  
**NTA**  
 Údarás Náisiúnta Iompair  
 National Transport Authority

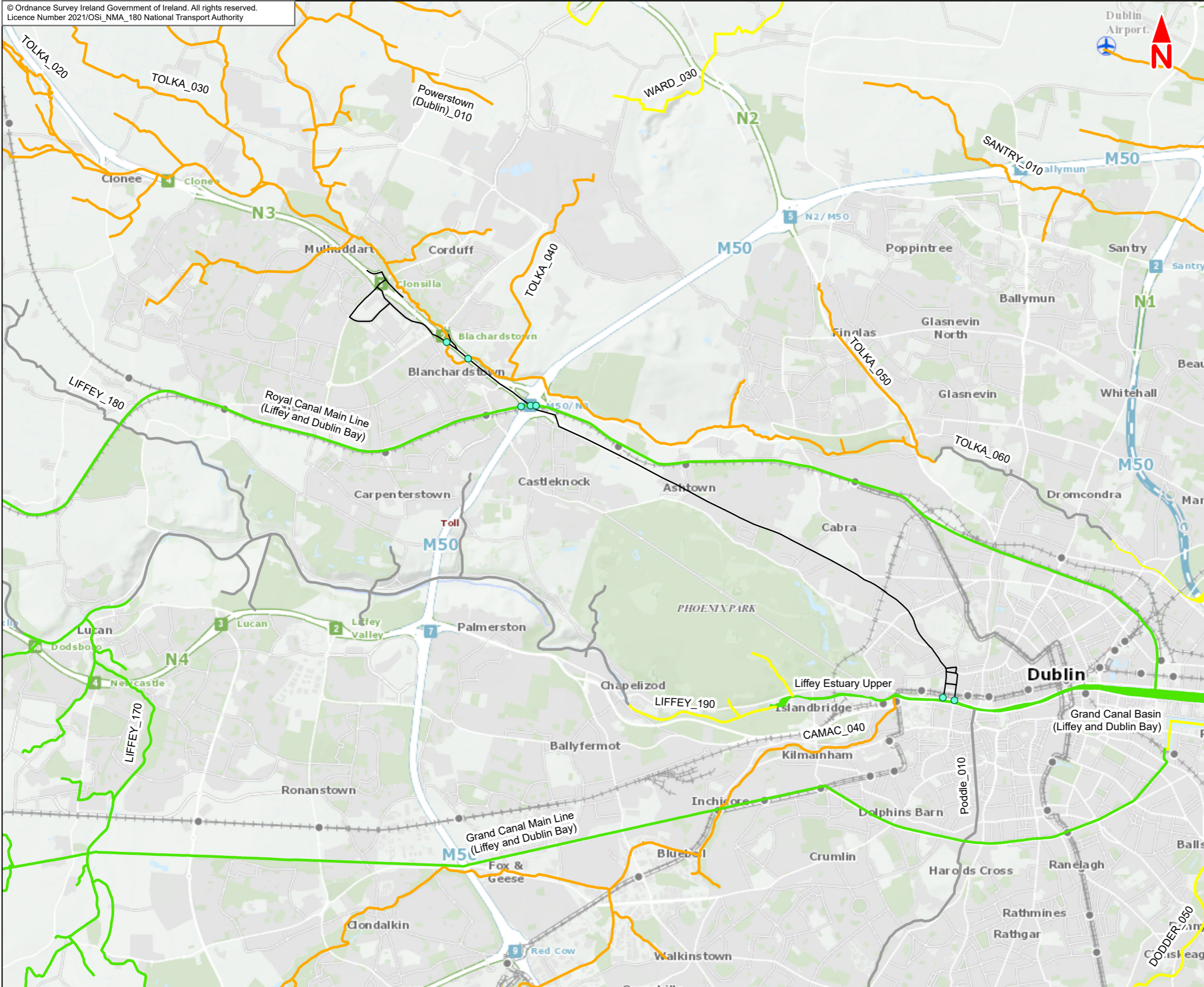
Consultant  
**JACOBS**  
**ARUP SYSTRA**

Programme Title <b>BUSCONNECTS DUBLIN CORE BUS CORRIDORS INFRASTRUCTURE WORKS</b>				
Drawing Title Blanchardstown to City Centre Core Bus Corridor Scheme Figure 1 Proposed Scheme Location				
Drawing File Name BCIDE-JAC-ENV_BD-005_XX_00-DR-GG-1001	Sheet Number 1 of 1	Status A	Rev M01	

Date 3/8/2022	Scale @ A3 1:50 000	Drawn EK	Checked PW	Approved DK
Project Code BCIDE	Originator Code JAC	QMS Code		

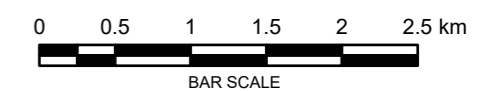


**Figure 2**  
Hydrological  
Connectivity to the  
Proposed Scheme



- Legend :**
- Blanchardstown to City Centre Core Bus Corridor Scheme
  - Scheme Waterbody Crossings
- River Waterbody WFD Status 2013 - 2018**
- Good
  - Moderate
  - Poor
  - Unassigned
- Canal Waterbody WFD Status 2013 - 2018**
- Good
  - Moderate
- Transitional Waterbody WFD Status 2013 - 2018**
- Good
  - Moderate

This drawing is not to be used in whole or in part other than for the intended purpose and project as defined on this drawing. Contains Irish Public Sector Data licensed under a Creative Commons Attribution 4.0 International (CC BY 4.0) licence.



**Disclaimer**

a. © National Transport Authority (NTA) 2021. This drawing is confidential and the copyright in it is owned by NTA. This drawing is not to be loaned, copied or otherwise reproduced in whole or in part or used for any purpose without the prior permission of NTA.

b. This drawing is to be used for the design element identified in the titleblock. Other information shown is to be considered indicative only. The drawing is to be read in conjunction with all other relevant design drawings.

c. O.S. data used for plans are printed under © Ordnance Survey Ireland Government of Ireland. All rights reserved. Licence Number 2021/OSI\_NMA\_180 National Transport Authority. All elevations are in metres and relate to OSI Geoid Model (OSGM15) Main Head. All Co-ordinates are in Irish Transverse Mercator Grid (ITM) as defined by OSI active local GPS station.

d. Information concerning the position of apparatus shown on this drawing is based on drawings supplied by the utility owners and/or the utility works contractor, whilst every care has been taken in the preparation of this drawing, positions should be taken as approximate and are intended for general guidance only and no representation is made by the NTA as to the accuracy, completeness, sufficiency or otherwise of this drawing and the position of the apparatus. The information contained herein does not purport to be comprehensive or final as the apparatus is subject to being altered and/or superseded. Recipients should not rely on this information. Any liabilities are hereby expressly disclaimed.

e. The information contained herein has been provided by the NTA but does not purport to be comprehensive or final. Recipients should not rely on the information. Neither the NTA nor any of its directors, officers, employees, agents, stakeholders or advisers make any representation or warranty as to, or accept any liability or responsibility in relation to, the adequacy, accuracy, reasonableness or completeness of the information provided as part of this document or any matter on which the information is based (including but not limited to loss or damage arising as a result of reliance by recipients on the information or any part of it. Any liabilities are hereby expressly disclaimed.

Rev	Date	Drn	Chk'd	App'd	Description
M01	Mar 2022	EK	PW	DK	ISSUE FOR PHASE 4 : PLANNING

Client: **NTA**  
Udarás Náisiúnta Iompair  
National Transport Authority

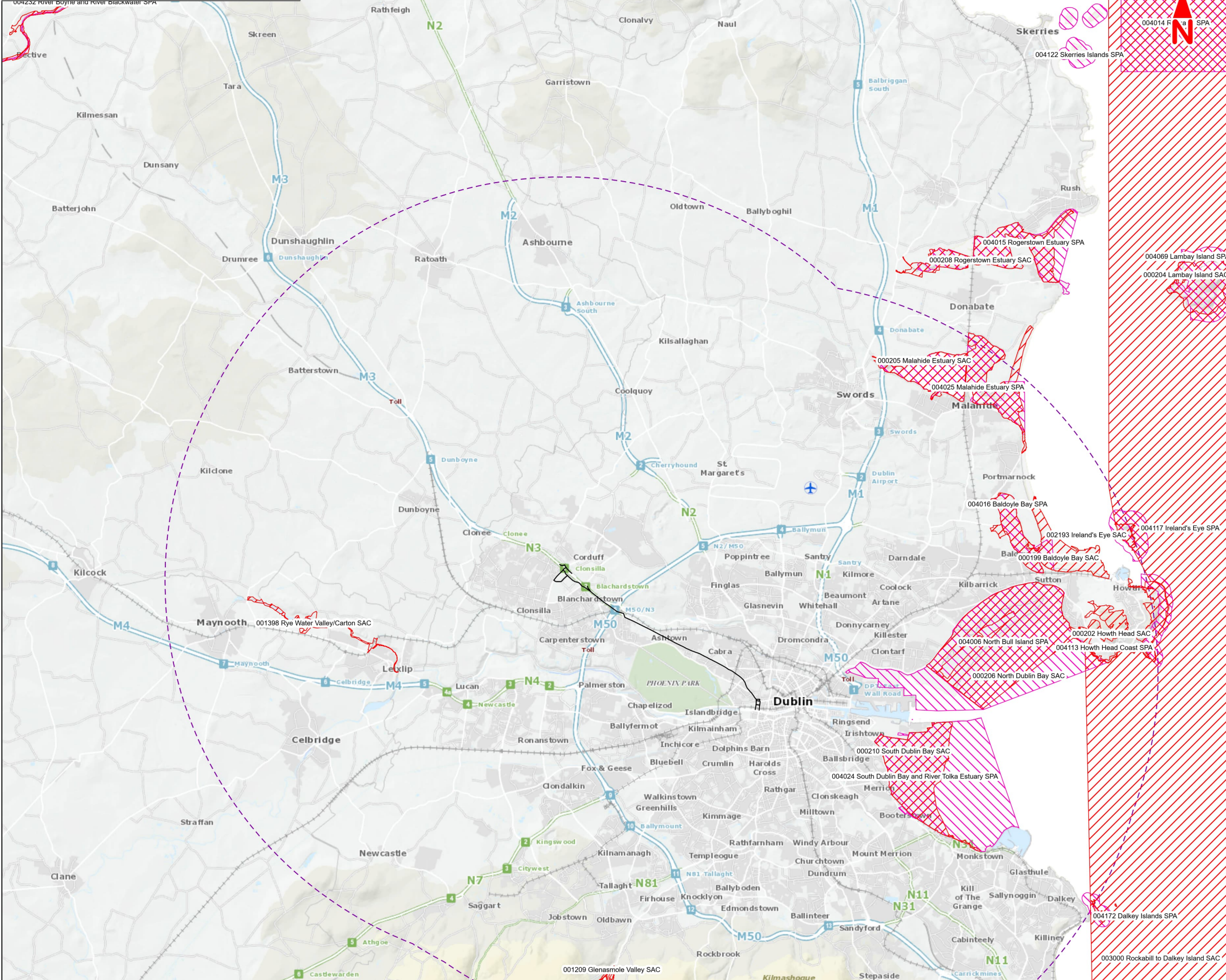
Consultant: **JACOBS ARUP SYSTRA**

Date: 3/8/2022 | Scale @ A3: 1:50 000  
 Drawn: EK | Checked: PW | Approved: DK  
 Project Code: BCIDE | Originator Code: JAC | QMS Code:

Programme Title: <b>BUSCONNECTS DUBLIN CORE BUS CORRIDORS INFRASTRUCTURE WORKS</b>			
Drawing Title: <b>Blanchardstown to City Centre Core Bus Corridor Scheme Figure 2 Hydrological Connectivity to the Proposed Scheme</b>			
Drawing File Name: BCIDE-JAC-ENV BD-005_XX 00-DR-GG-1003	Sheet Number: 1 of 1	Status: A	Rev: M01

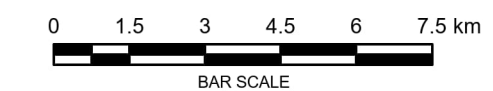


**Figure 3**  
European Sites in  
the Vicinity of the  
Proposed Scheme



- Legend :**
- Blanchardstown to City Centre Core Bus Corridor Scheme
  - 15km from Proposed Scheme
  - Special Protection Areas (SPA)
  - Special Area of Conservation (SAC)

Contains Irish Public Sector Data licensed under a Creative Commons Attribution 4.0 International (CC BY 4.0) licence.



**Disclaimer**

a. © National Transport Authority (NTA) 2021. This drawing is confidential and the copyright in it is owned by NTA. This drawing may not be either loaned, copied or otherwise reproduced in whole or in part or used for any purpose without the prior permission of NTA.

b. This drawing is to be used for the design element identified in the titleblock. Other information shown is to be considered indicative only. The drawing is to be read in conjunction with all other relevant design drawings.

c. O.S. data used for plans are printed under © Ordnance Survey Ireland Government of Ireland. All rights reserved. Licence Number 2021/OSI\_NMA\_180 National Transport Authority. All elevations are in metres and relate to OSi Geoid Model (OSGM15) Malin Head. All Co-ordinates are in Irish Transverse Mercator Grid (ITM) as defined by OSi active local GPS station.

d. Information concerning the position of apparatus shown on this drawing is based on drawings supplied by the utility owners and/or the utility works contractor, whilst every care has been taken in the preparation of this drawing, positions should be taken as approximate and are intended for general guidance only and no representation is made by the NTA as to the accuracy, completeness, sufficiency or otherwise of this drawing and the position of the apparatus. The information contained herein does not purport to be comprehensive or final as the apparatus is subject to being altered and/or superseded. Recipients should not rely on this information. Any liabilities are hereby expressly disclaimed.

e. The information contained herein has been provided by the NTA but does not purport to be comprehensive or final. Recipients should not rely on the information. Neither the NTA nor any of its directors, officers, employees, agents, stakeholders or advisers make any representation or warranty as to, or accept any liability or responsibility in relation to, the adequacy, accuracy, reasonableness or completeness of the information provided as part of this document or any matter on which the information is based (including but not limited to loss or damage arising as a result of reliance by recipients on the information or any part of it. Any liabilities are hereby expressly disclaimed.

Rev	Date	Drn	Chk'd	App'd	Description
M01	Mar 2022	EK	PW	DK	ISSUE FOR PHASE 4 : PLANNING

Client: **NTA**  
Udarás Náisiúnta Iompair  
National Transport Authority

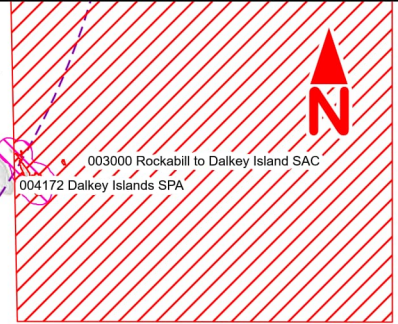
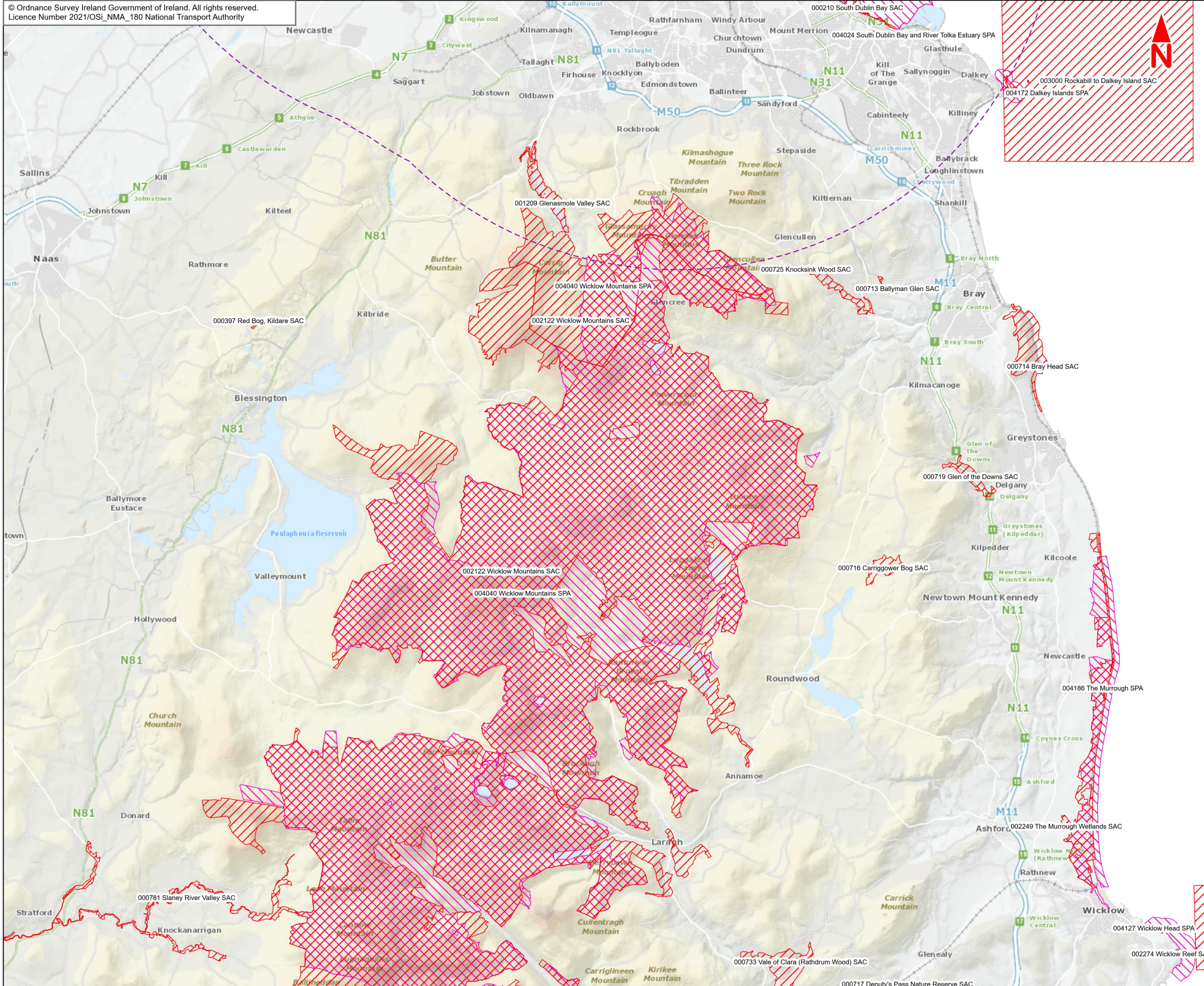
Consultant: **JACOBS ARUP SYSTRA**

Date: 3/8/2022 | Scale @ A3: 1:150 000  
Project Code: BCIDE | Originator Code: JAC

Drawn: EK | Checked: PW | Approved: DK

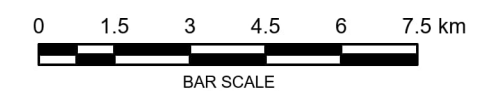
Programme Title: <b>BUSCONNECTS DUBLIN CORE BUS CORRIDORS INFRASTRUCTURE WORKS</b>			
Drawing Title: <b>Blanchardstown to City Centre Core Bus Corridor Scheme Figure 3 European sites in the Vicinity of the Proposed Scheme</b>			
Drawing File Name: BCIDE-JAC-ENV_BD-0005_XX_00-DR-GG-1090	Sheet Number: 1 of 2	Status: A	Rev: M01





- Legend :**
- Blanchardstown to City Centre Core Bus Corridor Scheme
  - - - 15km from Proposed Scheme
  - Special Protection Areas (SPA)
  - Special Area of Conservation (SAC)

Contains Irish Public Sector Data licensed under a Creative Commons Attribution 4.0 International (CC BY 4.0) licence.



**Disclaimer**  
a. © National Transport Authority (NTA) 2021. This drawing is confidential and the copyright in it is owned by NTA. This drawing must not be either loaned, copied or otherwise reproduced in whole or in part or used for any purpose without the prior permission of NTA.  
b. This drawing is to be used for the design element identified in the title block. Other information shown is to be considered indicative only. The drawing is to be read in conjunction with all other relevant design drawings.  
c. O.S. data used for plans are printed under © Ordnance Survey Ireland Government of Ireland. All rights reserved. Licence Number 2021/OSI\_NMA\_180 National Transport Authority. All elevations are in metres and relate to OSi Geoid Model (OSGM15) Mean Head. All Co-ordinates are in Irish Transverse Mercator Grid (ITM) as defined by OSi active local GPS station.  
d. Information concerning the position of apparatus shown on this drawing is based on drawings supplied by the utility owners and/or the utility works contractor, whilst every care has been taken in the preparation of this drawing, positions should be taken as approximate and are intended for general guidance only and no representation is made by the NTA as to the accuracy, completeness, sufficiency or otherwise of this drawing and the position of the apparatus. The information contained herein does not purport to be comprehensive or final as the apparatus is subject to being altered and/or superseded. Recipients should not rely on this information. Any liabilities are hereby expressly disclaimed.  
e. The information contained herein has been provided by the NTA but does not purport to be comprehensive or final. Recipients should not rely on the information. Neither the NTA nor any of its directors, officers, employees, agents, stakeholders or advisers make any representation or warranty as to, or accept any liability or responsibility in relation to, the adequacy, accuracy, reasonableness or completeness of the information provided as part of this document or any matter on which the information is based (including but not limited to loss or damage arising as a result of reliance by recipients on the information or any part of it. Any liabilities are hereby expressly disclaimed.

Rev M01 Date Mar 2022 Dm EK Chk'd PW App'd DK Description ISSUE FOR PHASE 4 : PLANNING

Client: **NTA**  
Udarás Náisiúnta Iompair  
National Transport Authority

Consultant: **JACOBS ARUP SYSTRA**

Date: 3/8/2022 Scale @ A3: 1:150 000  
Project Code: BCIDE Originator Code: JAC  
Drawn: EK Checked: PW Approved: DK

Programme Title: **BUSCONNECTS DUBLIN CORE BUS CORRIDORS INFRASTRUCTURE WORKS**

Drawing Title: **Blanchardstown to City Centre Core Bus Corridor Scheme Figure 3 European sites in the Vicinity of the Proposed Scheme**

Drawing File Name: BCIDE-JAC-ENV\_BD-0005\_XX\_00-DR-GG-1091  
Sheet Number: 2 of 2 Status: A Rev: M01